

# Apache 37

A new racing / auxiliary sailboat by *Chris★Craft*®

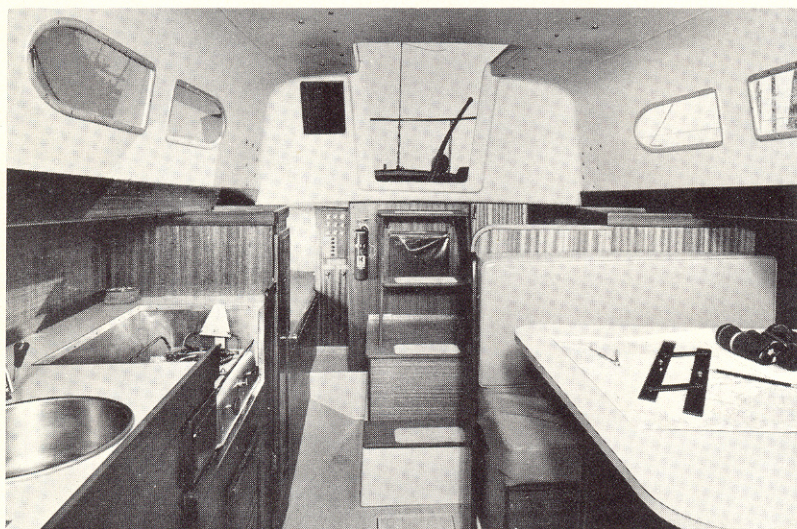




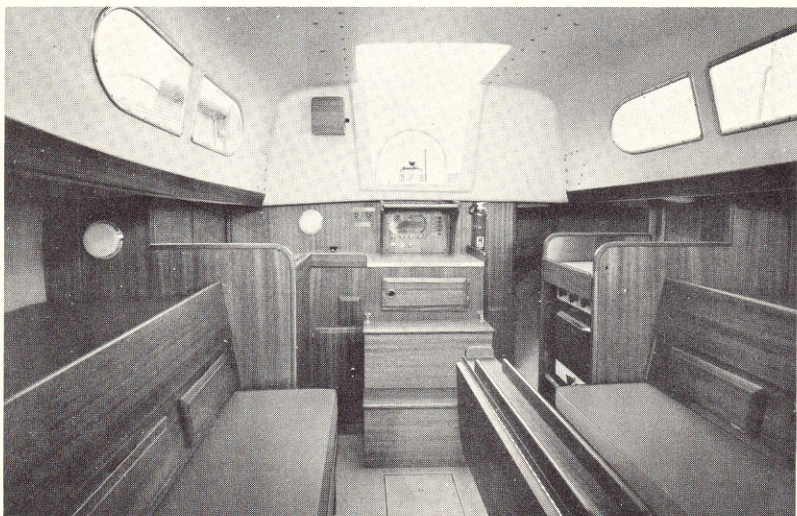
# Apache37 designed by Sparkman & Stephens



Standard cabin layout looking forward.



Standard cabin layout looking aft.



Optional cabin layout looking aft.

If you're determined to win races and also cruise your family in comfort, here's the boat for it — Chris-Craft's new Apache 37. Sparkman & Stephens, designers of many ocean racers — including several America's Cup defenders — created a completely new racing/cruising machine. It's a seakindly, low-resistance underbody on a light displacement hull. It has an unusual hull configuration featuring a fin keel, a blade rudder hung on an integral skeg, and a high ballast-to-displacement ratio.

Her high aspect ratio rig, with a large, powerful foretriangle, promises to make Apache 37 a tough competitor in both heavy and light air. She rates well under the CCA rule.

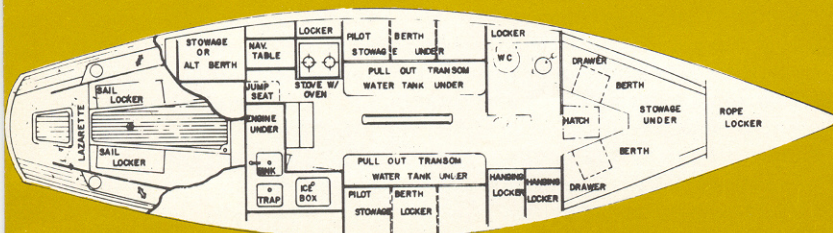
The decks are a brand-new Chris-Craft development — a teak-plank pattern in fiberglass. You can't tell it from the real thing, yet it's much easier to maintain, and it stays new-looking always.

The cabin is ideal for cruising. A roomy dinette is located mid-ships opposite a spacious, completely equipped galley. There are comfortable berths (each is 6'6" in length) for six persons. Headroom is 6'3½" in the main cabin and 5'11" in the private forward stateroom. Stowage throughout is unusually generous, with lockers, wardrobes, and drawers in handy locations. The head is roomy; it features a sink as standard equipment and a shower as an optional extra. This year's new optional cabin arrangement features a drop-leaf table (removable), a gimballed three-burner Hiller range with oven, a sit-down navigation station with flip-top chart table, pilot berths, and twin pull-out transom berths to give you a remarkably complete yet roomy layout. The new package also includes Monel fuel tanks (25 gal.) and stainless steel water tanks (70 gal.).

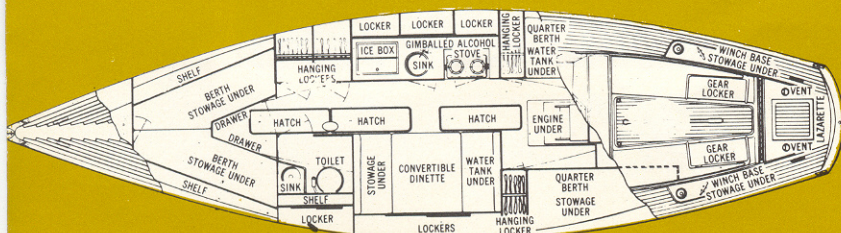
Cabin decor blends turquoise vinyl materials with satin-finished natural Philippine mahogany. A 30-hp Universal Atomic 4 auxiliary is standard equipment.



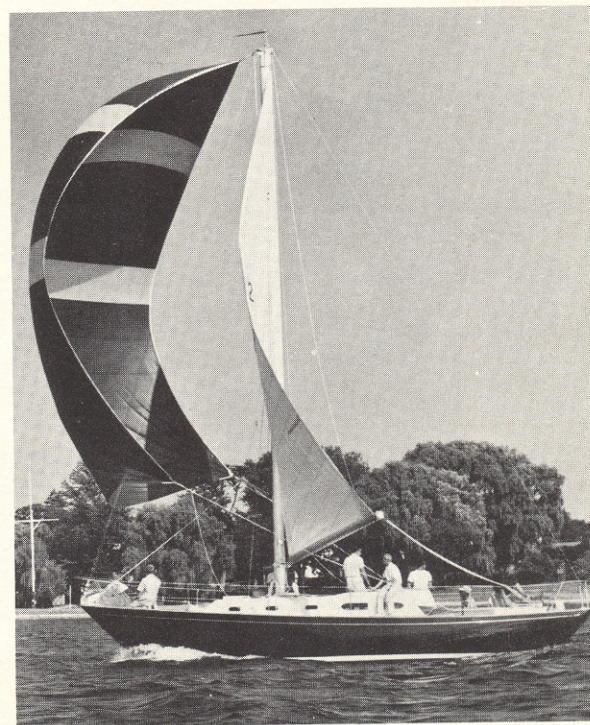
Sail Area 606 sq. ft.  
 Displacement 14,280 lbs.  
 Estimated CCA Rating 30.0  
 Headroom aft 6'3½"  
 LOA 37'0"  
 LWL 26'3"  
 Beam 10'2½"  
 Draft 5'9"



Alternate racing layout



Standard arrangement





# Apache37

## STANDARD EQUIPMENT & SPECIFICATIONS

**CONSTRUCTION** Hull and deck of high-strength fiberglass. Treated natural teak trim • Fiberglass plank pattern decks and cockpit sole • Fiberglass hatches • Gold cove stripe • Choice of colors on hull, boot top, and bottom • Self-bailing cockpit • Large gear lockers under cockpit seats with hatches secured by dogs.

**RUDDER AND STEERING** Reinforced fiberglass rudder with stainless steel post • Shaped tiller of laminated ash and mahogany • Self-lubricating bronze bearings.

**HARDWARE AND DECK FITTINGS** All fittings are chrome plated bronze, stainless steel, or special marine alloy • Sailing gear furnished includes cleats, genoa track, slides, sheets, and snatch blocks.

**WINCHES** Two sheet winches, P&S, mounted on integral fiberglass winch bases with stowage compartment under • Jib halyard winch, top action, mounted on stainless steel pad.

**SPARS** Elliptical extruded aluminum mast with external integral track, 6061-T6 alloy. Stainless steel tangs and fittings • Aluminum boom fitted with roller reefing gooseneck • Ratchet outhaul control • Main boom downhaul.

**STANDING RIGGING** All stainless steel, 1 x 19 cable with marine eye swaged fittings • Chrome-plated bronze turnbuckles • Stainless steel chain plates.

**RUNNING RIGGING** Dacron mainsheet • Dacron genoa and working jib sheets • Main and jib halyards, 7 x 19 stainless steel cable with dacron tails.

**TANKS** Fuel: 25-gal. Monel. Water: 45-gal. stainless steel.

**KEEL** Dry sand molded cast iron, coated and finished with anti-fouling paint. Bolted to hull.

**GROUNDING** For lightning protection, all standing rigging and spars are grounded to keel with copper straps.

**ELECTRICAL** Two separate 12-V systems, one for engine and one for lighting. Each system has two 6-V batteries connected in series for 12 volts; charged through a charge divider from the engine alternator • Six cabin lights International navigation lights plus mast head anchor light and wiring for optional (extra) spreader lights.

**ENGINE AND PROPULSION** 30-hp Universal Atomic 4 with direct drive and 35-amp alternator; rubber-mounted on fiberglass engine stringers with built-in drip pan Water-jacketed exhaust to sailboat-type muffler • Bronze propeller and shaft with water-lubricated rubber strut bearing • Diesel power optional (extra).

**CONTROLS** Cockpit-mounted Morse throttle and clutch controls with removable handles to eliminate fouling • Instruments located behind watertight port • Waterproof starter switch • Isolated engine ignition switch on electrical panel.

**GALLEY** Conveniently located opposite the dinette with over six feet of working space; includes: Top-loading foam-insulated fiberglass-lined ice box • Stainless steel sink • Positive shut-off galley pump • Gimballed two-burner alcohol stove in stainless steel well • Dish locker with sliding doors • Adequate stowage under counter in drawers and lockers.

**HEAD** Located on port side • Fully enclosed; includes wash basin with positive shut-off pump • Vanity counter with storage above and below • Easy-to-clean fiberglass floor and toilet platform • Full six-foot headroom • Sea-cocks on all through-hull connections • "Dorade" vent in cabin top.

**MISCELLANEOUS INTERIOR** Fiberglass cabin sole • Access hatches to bilge and keel bolts • Stowage under berths • Four hanging lockers • Four-inch foam berth cushions.

### ADDITIONAL STANDARD EQUIPMENT

Convertible dinette with cushions • Teak Exterior Woodwork • Hand Bilge Pump • Electrical Fuel Gauge 3 PVC Cowl Vents, 1 on Dorade Box • 9" Mooring Cleats, Fore and Aft • Main Sheet Traveler • Two 2 3/4 lb. Dry Chemical Fire Extinguishers • Limber Chains.

All illustrations and specifications contained in this literature are based on the latest product information available at the time of publication approval. The right is reserved to make changes at any time without notice, in prices, colors, materials, equipment, specifications and models, and also to discontinue models.

**WARRANTY**—For the first 24 months or 400 hours of operation, whichever comes first, Chris-Craft Corporation will repair or replace, at its option, parts defective by reason of faulty workmanship or material returned to the selling dealer with transportation charges to the point of manufacture. For the first 12 months or 200 hours of operation, whichever comes first, Chris-Craft will pay the labor costs as determined by its schedule for removal and reinstallation of such parts. Chris-Craft does not warrant used boats or engines, coatings, platings, furnishings, metal discoloration, racing boats or engines, altered boats or parts or speeds, and makes no other warranties, express or implied.

*Chris-Craft®*

Chris-Craft Corporation, Sailboat Division, Pompano Beach, Florida 33061



EFFECTIVE AUGUST 1, 1966



# SAILBOAT DIVISION

## APACHE 37 ..... \$19,990

### 30 H.P. — DIRECT DRIVE UNIVERSAL ATOMIC FOUR

#### CHRIS-CRAFT APPROVED OPTIONAL EQUIPMENT FOR FACTORY INSTALLATION

These prices apply only when included on original order for Sailboat and invoiced with same.

Description	Optional Equip. No.	Price
BACKSTAY—Insulated for Radio Antenna	26-10-01	\$70.00
BLOWER, BILGE—12V	03-02-12	55.00
SNATCH BLOCKS, 3"—Each Extra	26-13-01	Later
BUNK BOARDS—for Berths, Installed	12-16-01	70.00
CARPET—for Cabin Sole	12-18-01	55.00
COMPASS, MERRIMAN— (Apparent 4) Mounted, Fwd. end of Cockpit	07-03-02	75.00
CRADLE—Shipping	22-02-00	350.00
CUSHIONS—Cockpit	02-25-12	95.00
DRAPES—for Cabin Portlights w/Rods and Brackets	02-29-00	160.00
EXTINGUISHER, FIRE—CO-2 Manual 15#	15-01-15	275.00
CO-2 Automatic 15#	15-02-15	435.00
FENDERS—2 Canal, 3' Mahogany w/2-10' Lines	01-08-01	25.00
Dock, 6" x 15" Air Set of 4 w/Pump	01-10-11	35.00
HOOD—For Main Cabin Companionway Slide, Fiberglass	21-09-05	52.00
LIGHTS—Spreader, 12V	11-13-12	38.00
LIGHT READING—Port Berth, Fwd. Cabin	11-17-00	28.00
PORTLIGHT —Opening w/Screen, each, in Place of Std.	21-20-01	45.00
PUMP—Bilge, Electric, 12V Automatic	16-08-12	90.00
Bilge, Electric, 12V Manual	16-09-12	80.00
BOW RAIL ONLY	17-03-01	115.00
Stern Pulpit & Life Lines	17-02-07	425.00
RIGGING—Flag Halyard on Stbd. Spreader	26-11-01	12.00
Flag Halyard on Masthead	26-11-02	14.00
Genoa Track Slides, Extra P&S	26-12-01	18.00
Shroud Rollers, Per Pair	26-14-01	7.00

Description	Optional Equip. No.	Price
Reaching Strut Including Bales on Mast	26-15-01	\$102.00
Adtl. Lengths of Genoa Track Installed on Rail, Per Foot, P&S	26-12-03	16.00
SCREENS—for Main Companionway & Fwd. Hatch	21-16-01	45.00
SPEEDOMETER—Kenyon, 12V	18-12-11	270.00
SPINNAKER POLE—w/Track, Incl. Guys, Topping Lift & Halyard	26-03-01	600.00
PEDESTAL STEERER—w/5" DW Compass Controls in Std. Position	10-04-04	Later
VENT—Dorade, Adtl., Over Main Cabin	03-04-01	95.00
Cowl, Fwd. Deck on C/L, Aft End of Rope Locker	03-04-03	46.00
WATER PRESSURE SYSTEM—PAR Cold Water Only, 12V Hot & Cold, Engine Heated w/10 Gal. Tank and 115V AC Immersion Unit	16-01-01	165.00
	16-04-06	465.00
WINCH—#2 Top Action for Spinnaker Halyard (1)	26-02-10	82.00
#2 Top Action for Main Halyard (1)	26-02-11	82.00
#2 Reel Type for Main Halyard (1)	26-02-14	180.00
WINCHES—#6 for Genoa Sheet in Place of Std. #5, (2)	26-02-18	62.00
#6 for Genoa Sheet in Addition to Std. #5, (2)	26-02-19	445.00
WIRING—1-115V AC, 30 Amp, 3 Wire Inlet, 4-3 Wire Duplex Outlets, & 50' 3 Cond. Shore Cable with Adapter	14-01-21	265.00

ALL PRICES ARE F.O.B. FACTORY. PRICES AND SPECIFICATIONS CONTAINED IN THIS LITERATURE ARE BASED ON THE LATEST PRODUCT INFORMATION AVAILABLE AT THE TIME OF PUBLICATION APPROVAL. THE RIGHT IS RESERVED TO MAKE CHANGES AT ANY TIME WITHOUT NOTICE IN PRICES, COLORS, MATERIALS, EQUIPMENT, SPECIFICATIONS, AND MODELS AND ALSO TO DISCONTINUE MODELS. EQUIPMENT AND ACCESSORIES PICTURED BUT NOT INCLUDED IN THE LIST OF STANDARD EQUIPMENT ITEMS WILL BE FURNISHED AT EXTRA COST IF AVAILABLE. IRRESPECTIVE OF THE PLACE OF MANUFACTURE, THE RIGHT IS RESERVED TO SHIP FROM ANY CHRIS-CRAFT FACTORY. ALL ORDERS ACCEPTED SUBJECT TO PRICES PREVAILING AT TIME OF SHIPMENT.

Use Correct Optional Equipment Part Number When Ordering

Prices Less Sails

SAILBOAT DIVISION • CHRIS★CRAFT CORPORATION • POMPANO BEACH, FLORIDA