

Chris-Craft
CAPRI
26



Chris-Craft®

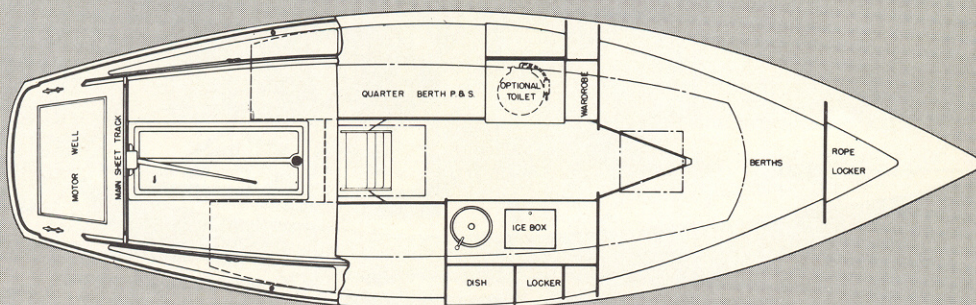
CAPRI 26

The Capri 26, Chris-Craft's third Sparkman and Stephens design, has turned out to be one of the most exciting sailboats afloat.

She's a fast, safe, all-fiberglass four-berth auxiliary which meets MORC competition rules. There's a large cockpit surrounded by uncluttered decks, and an outboard well for mounting auxiliary power. Below, there's a four-berth layout with a galley and a marine toilet.

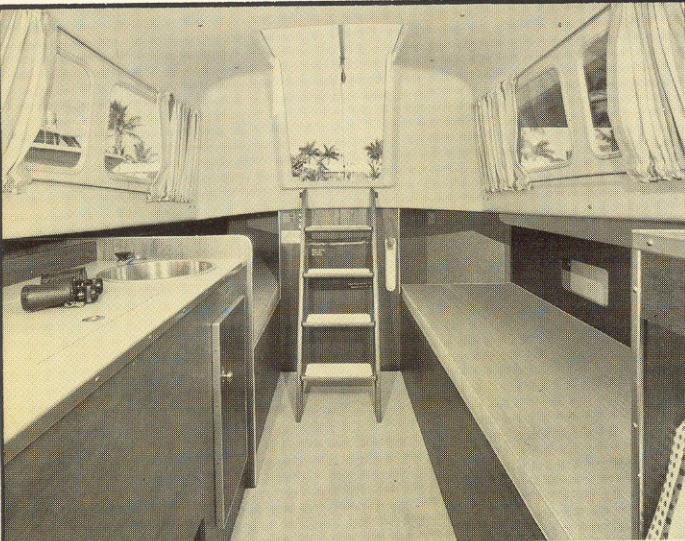
The underwater design features a fin keel and a rudder-skeg for optimum stability and less wetted surface.

Standard hull is white. Available by special order in red, dark green, light blue, or dark blue.

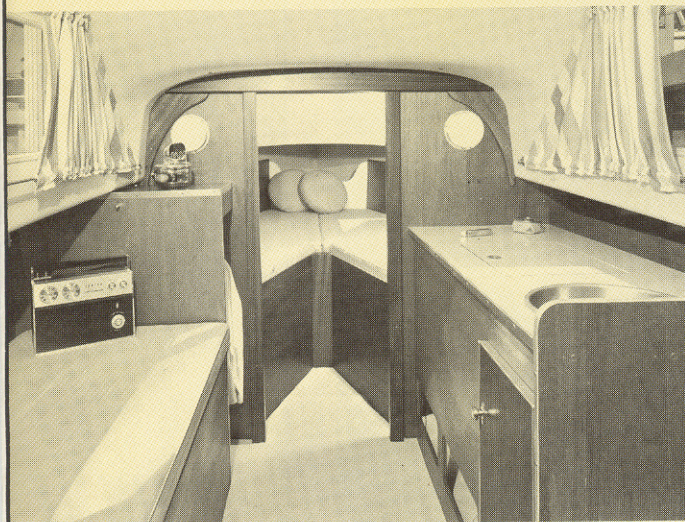


SPECIFICATIONS

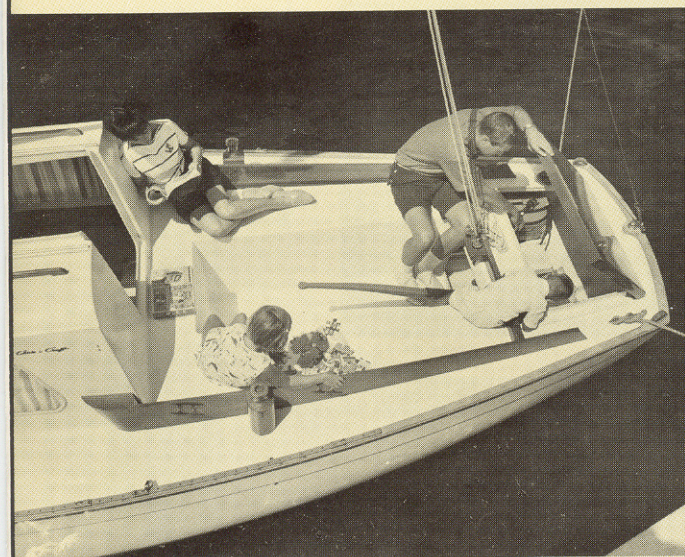
Length Overall — 26'-3"
Length Waterline — 19'-0"
Beam — 8'-2"
Draft — 4'-0"
Displacement—4800 lbs.
Ballast—1830 lbs.
Sail Area (100% Fore Triangle) — 301 sq. ft.



Looking aft in family-sized cabin, which has plentiful storage and is easy to keep shipshape.



Forward view. Vinyl floor covering, upholstery and countertops blend with natural-wood finishes.



One-piece self-bailing cockpit. Motor well has front access panel for easy operation of outboard auxiliary.

HULL CONSTRUCTION

Entire hull of reinforced fiberglass, color-impregnated. Hull thickness up to $\frac{3}{8}$ ".

CHAIN PLATES

Stainless steel bolted to integral bulkheads.

FASTENINGS

All fastenings are of silicon bronze and brass.

KEEL

Cast Iron—1830 lbs. bolted to hull.

DECKS AND CABIN TOP

Reinforced fiberglass, color-impregnated. Decks are constructed for strength and stiffness. Decks and cabin top have non-skid surface pattern molded in with cabin top. Varnished Phil. mahogany hand-rails. Bulwark and taffrails are molded into hull with natural teak caps. Scuppers are located on either side to drain deck water overboard.

DECK FITTINGS

Heavy $8\frac{1}{4}$ " mooring cleat forward, 2 - $6\frac{1}{4}$ " cleats aft, stem head fittings and bow chocks. Necessary cleats and blocks for working sail.

COCKPIT

Self-bailing type of one piece reinforced fiberglass color impregnated and molded integrally with deck unit. Cockpit floor has non-skid pattern. Self draining cockpit seats. Clear dark solid Phil. mahogany cockpit coamings.

COMPANIONWAY HATCH, MAIN CABIN TOP FORWARD HATCH AND MOTOR WELL HATCH

Clear, dark, varnished philippine mahogany.

PORT LIGHTS

Stationary plexiglass.

CABIN INTERIOR

Four berths and mattresses (30" wide x 6'-3" long), two quarter berths located in the main cabin and two forward with large storage lockers under each berth. Marine toilet fwd. on port side. Berth trim varnished Phil. mahogany. Joiner work of Phil. mahogany plywood—varnish finish. Forepeak rope locker. Vinyl carpet cabin sole. Hanging locker with turquoise high-pressure laminate-covered shelf. High-pressure laminate galley counter top — turquoise — with closed locker space under galley.

Dish locker — varnished.

Large top loading insulated fiberglass ice box, and stainless steel galley sink. 18.5-gal. fresh water supply with chrome-plated galley pump fixture. 2-burner alcohol stove. Complete molded headliner—white—with molded-in duct, accessible for routing electrical wiring. Full-length floor hatches.

RUDDER

Reinforced fiberglass. Tobin bronze rudder post, bronze fittings.

TILLER

Varnished ash.

RIGGING

Masthead sloop rig. Extruded aluminum oval section mast (6063-T6) and oval section boom with roller reefing standard. Stainless steel standing rigging 1 x 19 with swaged fittings and bronze turnbuckles. Stainless steel tangs and fixtures with stainless steel and aluminum fittings at gooseneck and outhaul. Sail tracks integral with mast and boom. Jib and main halyard stainless steel with dacron tail.

HEADROOM

Forward — 4'-9" Aft — 5'-8"

AUXILIARY POWER

Water-tight ventilated motor well. Suggested use of 6 HP maximum auxiliary outboard installation with low profile long shaft engine. Unique engineering design has eliminated all possible flooding.

TANKS

Fresh water tank, galvanized, 18.5-gal.

SHIPPING DATA

Weight Without Cradle — 4800 lbs.
Weight With Cradle — 5480 lbs.
Length — 26'-3"
Beam — 8'-2"
Height Domestic — 9'-5"
Export with Cradle
(Keel Not Attached) — 7'-3"

STANDARD EQUIPMENT

Water Tank — 18.5-gal., Fresh Water System, Galley Sink — stainless steel, Stove, Dish Locker, Hardware — bronze, Hanging Clothes Locker, Rope Locker, Ice Box—fiberglass lined—insulated, Mast and Boom extruded aluminum-coated, Roller Reefing Boom, Seacocks on all underwater thru-hull fittings, Handrails on Cabin Roof.



Chris★Craft®

Chris-Craft Sailboat Division, Chris-Craft Corporation, Pompano Beach, Florida

EFFECTIVE JANUARY 1, 1967

Chris★Craft

SAILBOAT DIVISION

CAPRI 26 \$5,990

CHRIS-CRAFT APPROVED OPTIONAL EQUIPMENT FOR FACTORY INSTALLATION

These prices apply only when included on original order for Sailboat and invoiced with same.

Description	Optional Equip. No.	Price
ANCHOR —13 lb. Std. Danforth w/Shackle	01-01-13	\$28.00
BERTH PADS —4—2 in Fwd. Compartment, 2 in Main Compartment	02-27-00	210.00
BOOT TOP —Painted Vermillion	22-20-01	80.00
Painted White	22-20-02	80.00
Painted Black	22-20-03	80.00
Painted Light Blue	22-20-04	80.00
Painted Dark Blue	22-20-05	80.00
Painted Cove Green	22-20-06	80.00
CRADLE —Shipping	22-02-00	140.00
CUSHIONS —Cockpit	02-25-12	90.00
DRAPES —For Cabin Windows w/Rods and Brackets	02-29-00	77.00
GENOA SHEET GEAR —Including Track, Fairlead Blocks, Two #2 Winches and Sheets	26-04-01	125.00
LIGHTING —Running and Interior w/1-12V Battery	11-24-00	180.00
LINE —Anchor 100' of ½" Nylon w/Thimble	01-03-06	40.00
PANELING AND SHELVES —Fwd. & Main Compartments	12-24-02	170.00
BOW RAIL and LIFE LINES	17-02-00	245.00

Description	Optional Equip. No.	Price
RECTIFIER —M-12-5 Rectifier w/1-115.VAC 30 Amp 3-Wire Inlet, 2 Duplex outlets, 3-wire 25' Shore Cable w/Adapter	14-07-08	\$275.00
ROLLER REEFING —Main Boom—Geared in Place of Std.	26-01-03	66.00
SPEEDOMETER —Kenyon Morcee	18-12-13	115.00
SPINNAKER POLE —w/Track Inc. Guy & Sheet, Topping Lift, Halyard & Blocks	26-03-01	240.00
STOVE —2 Burner Alcohol	19-05-01	48.00
TABLE —Portable	02-02-03	98.00
TOILET —Marine w/Curtain to Enclose V-Berth Area	13-01-01	155.00
WINCHES —#3-Top Action Jib Sheet (2)	26-02-03	325.00
#1-Top Action Jib Sheet (2)	26-02-04	150.00
#2-Top Action Jib Sheet (2)	26-02-05	195.00
#1-Top Action for Main Halyard (1)	26-02-08	85.00
#1-Top Action for Jib Halyard (1)	26-02-09	85.00

ALL PRICES ARE F.O.B. FACTORY. PRICES AND SPECIFICATIONS CONTAINED IN THIS LITERATURE ARE BASED ON THE LATEST PRODUCT INFORMATION AVAILABLE AT THE TIME OF PUBLICATION APPROVAL. THE RIGHT IS RESERVED TO MAKE CHANGES AT ANY TIME WITHOUT NOTICE IN PRICES, COLORS, MATERIALS, EQUIPMENT, SPECIFICATIONS, AND MODELS AND ALSO TO DISCONTINUE MODELS. EQUIPMENT AND ACCESSORIES PICTURED BUT NOT INCLUDED IN THE LIST OF STANDARD EQUIPMENT ITEMS WILL BE FURNISHED AT EXTRA COST IF AVAILABLE. IRRESPECTIVE OF THE PLACE OF MANUFACTURE. THE RIGHT IS RESERVED TO SHIP FROM ANY CHRIS-CRAFT FACTORY. ALL ORDERS ACCEPTED SUBJECT TO PRICES PREVAILING AT TIME OF SHIPMENT.

Use Correct Optional Equipment Part Number When Ordering

Prices Less Sails

SAILBOAT DIVISION • CHRIS★CRAFT CORPORATION • POMPANO BEACH, FLORIDA