

Chris★Craft®

**CAPRI
30**



SAIL DIMENSIONS

- 1 — 330 sq. ft.
- 2 — 226 sq. ft.
- 3 — 108 sq. ft.

SPECIFICATIONS

Length Overall — 30'- 0"

Length Waterline — 25'- 0"

Beam — 9'- 8"

Draft

Center Board Up — 3'- 9"

Center Board Down — 7'- 2"

Freeboard, Fwd. at

Water Line — 4'- 3"

Freeboard, Aft at

Water Line — 3'- 2"

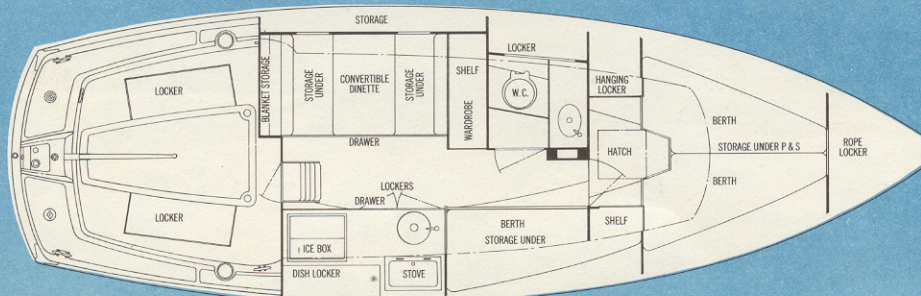
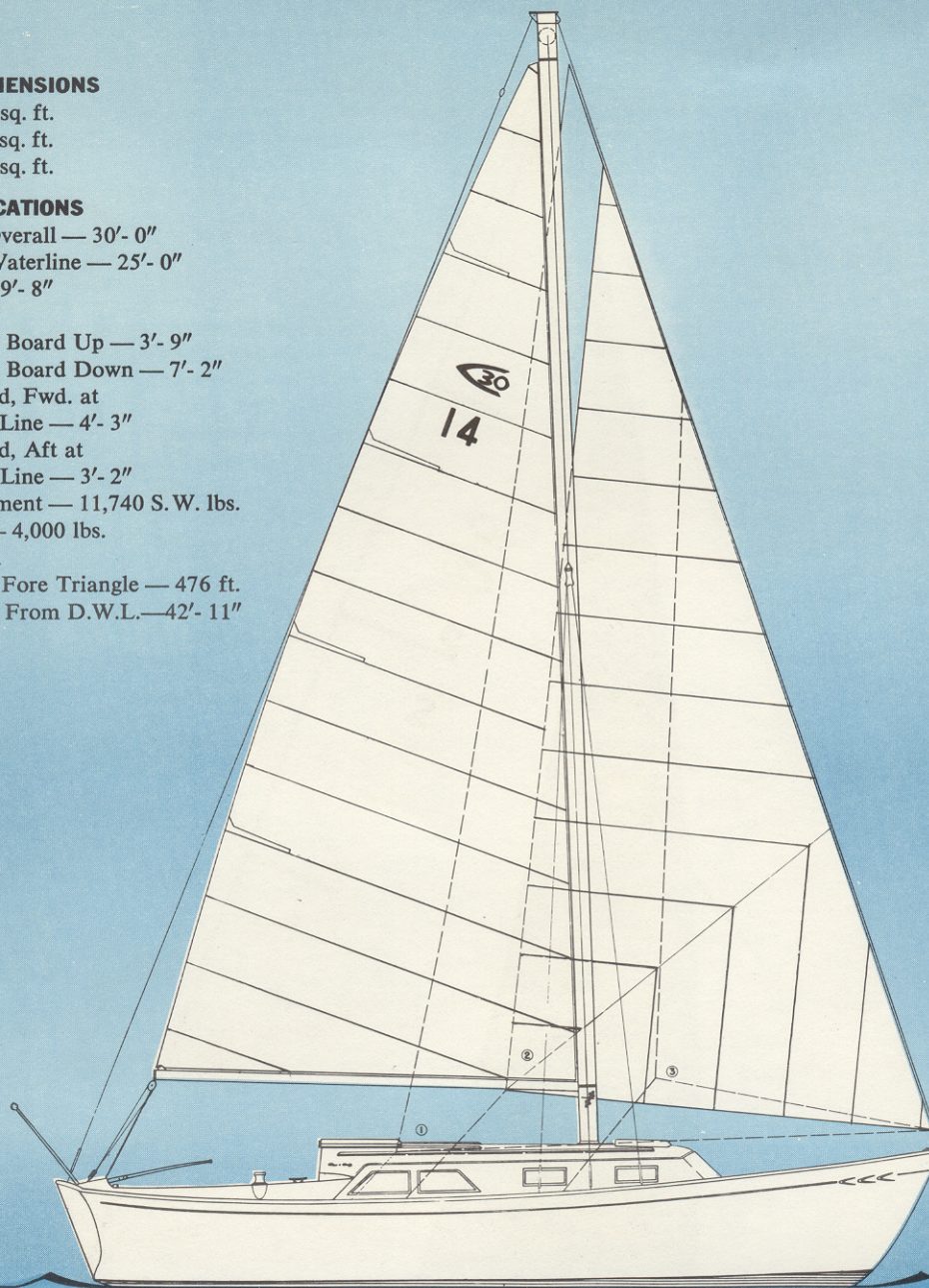
Displacement — 11,740 S. W. lbs.

Ballast — 4,000 lbs.

Sail Area

100% Fore Triangle — 476 ft.

Mast Ht. From D.W.L.—42'- 11"



CAPRI 30

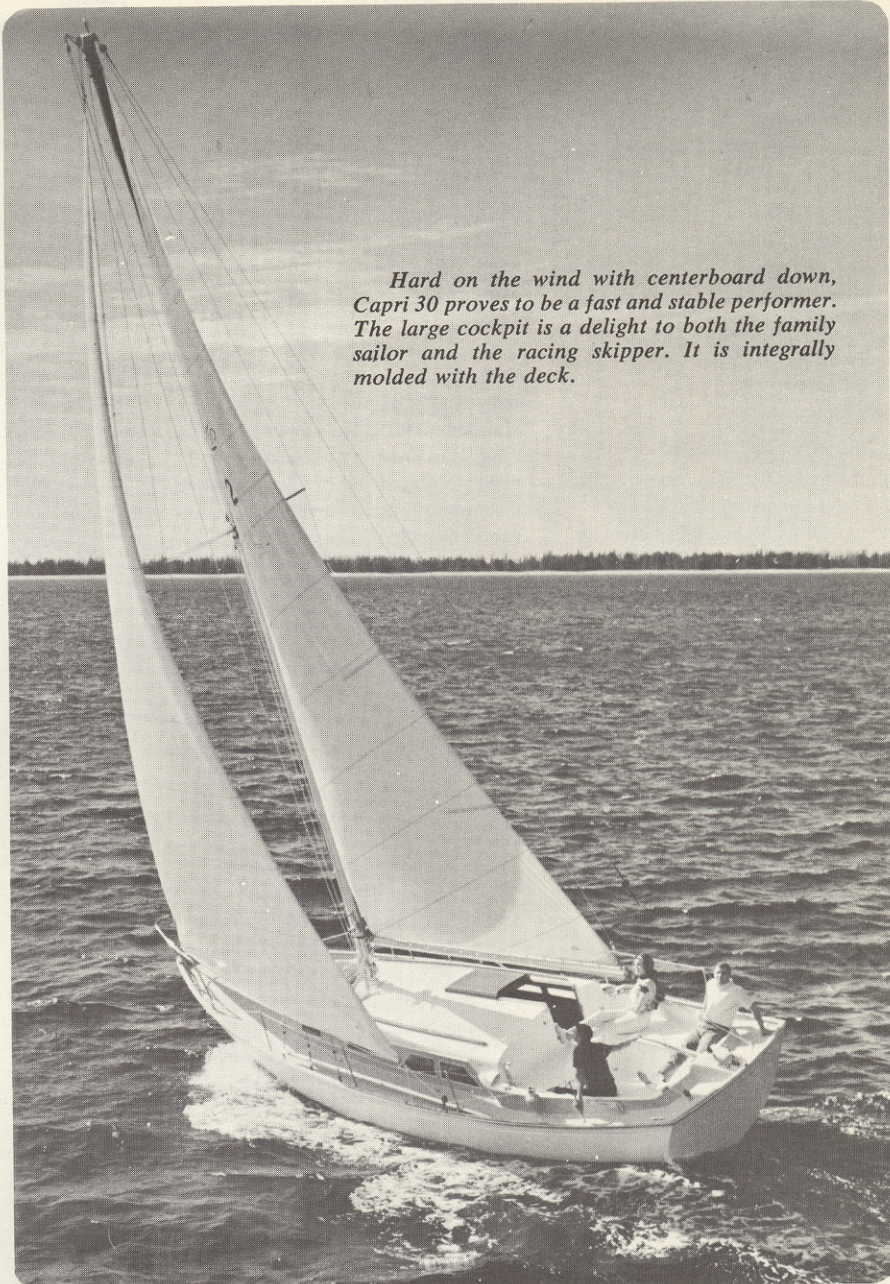
is a brand-new 30' five-sleeper auxiliary designed by Sparkman and Stephens and built by Chris-Craft. With all-fiberglass construction, keel centerboard, and sloop rig, she's ideally suited for both family cruising and racing. A tall mast and short boom offer easy handling for the cruising skipper, and all the height the competition sailor needs for large headsails (mast-head rig is standard).

A wide, uncluttered, non-skid deck makes both sail handling and lounging equally pleasurable. The self-bailing cockpit is unusually large, with plenty of storage space beneath each seat. The cabin is tastefully decorated and luxurious, with natural mahogany trim. There's a private forward stateroom, enclosed lavatory, modern galley with full equipment and lots of counter space, wide lounge, and a dinette which converts to a double berth. Chris-Craft famed "space engineering" has provided enough room below to make living aboard as comfortable as on the big boats (headroom, for example, is 6'2½"). Capri 30 is inexpensive to operate and requires a minimum amount of upkeep. For the sailing family of modest income, it presents an excellent opportunity to own a boat of the finest quality and with the very best sailing characteristics.

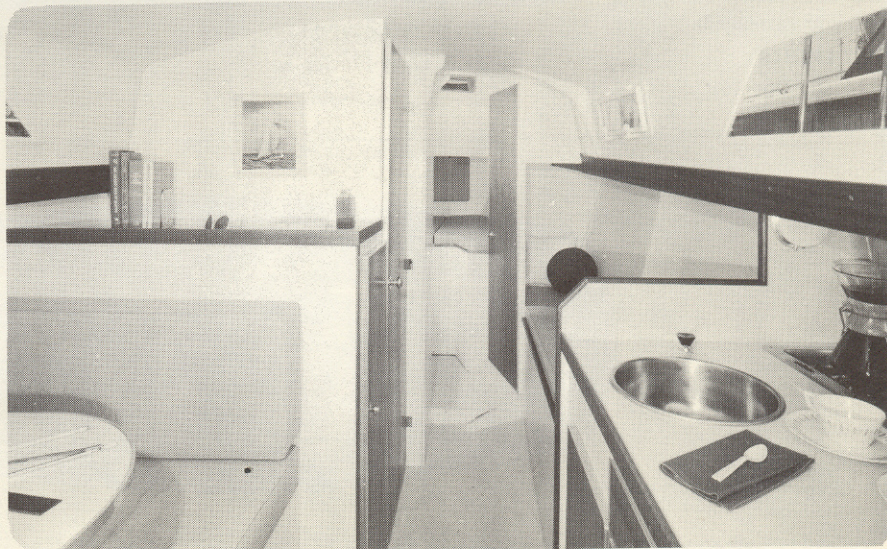


With 25 feet of waterline length, the Capri 30 has a fast hull for racing, yet there's no sacrifice of interior space. A proven race winner with many victories to her credit, she rates well and can race under either MORC or CCA rules.

The cabin layout is extremely functional. The wide dinette table converts to a double berth. The table may be used for a chart table. The galley has a top-loading icebox and plenty of storage. The enclosed head features a sink-and-vanity combination. A door on the forward stateroom provides the privacy of two separate sleeping areas.



Hard on the wind with centerboard down, Capri 30 proves to be a fast and stable performer. The large cockpit is a delight to both the family sailor and the racing skipper. It is integrally molded with the deck.



HULL CONSTRUCTION

Entire hull of reinforced fiberglass, color impregnated white. Hull thickness up to $\frac{5}{8}$ ".

CHAIN PLATES

Stainless Steel bolted to integrally molded fiberglass knees.

FASTENINGS

All fastenings are of silicon bronze and brass.

KEEL

Cast lead, 4,000 lbs. inside.

CENTERBOARD

Galvanized steel.

DECKS AND CABIN TOP

Reinforced fiberglass, color impregnated white. Decks are constructed for strength and stiffness. Decks and cabin top have non-skid surface pattern. Cabin top has varnished mahogany handrails. Bulwark and Taffrail are molded into hull with natural teak caps. Scuppers are located on either side to drain decks overboard.

DECK FITTINGS

Heavy 10" mooring cleat forward, two $8\frac{1}{4}$ " cleats aft, stainless steel stem head fittings and bow chocks. Necessary cleats and fairleaders for working sails.

COCKPIT

Self-bailing type of one piece reinforced fiberglass, color impregnated and molded integrally with deck unit. Cockpit floor has non-skid pattern. Self draining cockpit seats. Integrally molded cockpit coamings and jib winch stands.

COMPANIONWAY HATCH AND MAIN CABIN TOP FORWARD HATCH

Clear dark Philippine mahogany filled and varnished.

PORT LIGHTS

Fixed and Opening.

CABIN INTERIOR

Two "V" berths forward in private stateroom. Lounge berth to starboard with convertible dinette berth to port. Large storage lockers under each berth. Berth trim-varnished mahogany. Joiner work of painted plywood with varnish finish trim. Forepeak rope locker. Hanging lockers with high pressure laminate covered shelves. High pressure laminate galley counter top with closed locker space under galley. Dish locker-varnished. Large top-loading insulated fiberglass ice box, and stainless steel galley sink. 32-gallon fresh water supply with chrome plated galley pump fixture. Complete molded headliner with molded-in duct, accessible for routing electrical wiring. Full length floor hatches.

RUDDER

Reinforced fiberglass. Tobin bronze rudder post, chrome plated bronze fittings.

TILLER

Varnished ash.

RIGGING

Masthead sloop rig. Extruded aluminum oval section mast (6063-T6) and oval section boom. Stainless steel standing rigging 1 x 19 with swaged fittings and chrome-plated bronze turnbuckles. Stainless steel tangs and fixtures with stainless steel and chrome-plated bronze fittings at gooseneck and outhaul. Sail tracks integral with mast and boom. Running rigging, all Dacron lines, required fittings for working sails.

HEADROOM

Forward — 5'- 11 $\frac{1}{2}$ "
Aft — 6'- 2 $\frac{1}{2}$ "

AUXILIARY POWER

30 H.P. Grey Marine Sea Scout
91 cu. in.

TANKS

Fuel — 20 gallon.
Fresh water — 32 gallon.

SHIPPING DATA

Weight with cradle — 13,300 lbs.
Length — 30'- 0"
Beam — 9'- 8"
Height Domestic — 9'- 9 $\frac{1}{4}$ "
Export with Cradle — 9'- 9 $\frac{1}{4}$ "

STANDARD EQUIPMENT

Alcohol Stove, 2-burner (Recessed)
Anchor 13 lb. Danforth
Anchor Line
Berths (5)
Bilge Pump-Hand
Boom, Extruded Aluminum
Cabin Floor — Vinyl Rug
Chocks
Cleats
Dish Locker
Dock Lines
Dynaplates (2)
Dinette
Electrical Bonding System
Electric Lights
Fire Extinguisher
2 — $\frac{1}{2}$ lb. Dry Chemical
Foam Mattresses
Fog Bell
Fuel-Measuring Stick
Handrails, on Cabin Roof
Hatch, (Cabin Top)
Icebox Fiberglass, Top Loading,
7 cu. ft.
International Navigation Lights
Lavatory Wash Basin —
Stainless Steel
Life Preservers
Lightning Grounding System
Mast — Extruded Aluminum
Mirror
Mooring Cleats
Muffler (Stainless Steel)
Sail Bins P&S Under Cockpit Seats
Seacocks (Underwater Fitting)
Seats — Cockpit, P&S
(Storage Under)
Screens
Scuppers (Thru Deck)
Signal Horn
Spillproof Drawers

Stern Pole & Ensign
Switch, Master 12V System
Tiller, Steering
Toilet With Seacock
Valves, Fuel Shut-Off
Ventilators — Engine Room
Wardrobes
Water Tank
Winches, Jib Sheet — Merriman #3

OPTIONAL EQUIPMENT

Backstay, Insulated for Radio
Antenna
Bilge Blower, 12V
Boat Hook, w/Clips 6'- 9"
Compass, #406-S Minot Olympic
4" Bracket Mounted Fwd.
Cockpit.
Cradle
Cushions, Cockpit
Extinguisher, CO-2, 15 lb. Manual
Extinguisher, CO-2, 15 lb.
Automatic
Fender, 2/Canal 3' Philippine
mahogany w/2 — 10' Lines
Fender, Dock, 6" x 15" Air.
Set of 4 w/Pump
Genoa Sheet Gear, Incl. Track,
Fairlead Blocks
Life Lines & Stanchions, Side &
Fwd. Deck
Lights, Spreader, 12V
Pump, Bilge, Electric, 12V,
Automatic or Manual
Rectifier, Dresser M12-5
to Charge Accessory Battery
Roller Reefing, Main Boom
Spinnaker Pole, w/Track Incl.
Guys Topping Lift & Halyard
Spotlight, Portable w/Jack, 12V
Strainer, Gasoline
Winches, Main Sheet No. 3
Winches, Jib Sheet, 2 — #5 in
Place of Std.
Wiring: 115V, AC

All illustrations and specifications contained in this literature are based on the latest product information available at the time of publication approval. The right is reserved to make changes at any time without notice, in prices, colors, materials, equipment, specifications and models, and also to discontinue models.

Chris-Craft[®]
Chris-Craft Corporation, Pompano Beach, Florida

EFFECTIVE AUGUST 1, 1966



SAILBOAT DIVISION

CAPRI 30 \$15,670

25 H.P. Gray

CHRIS-CRAFT APPROVED OPTIONAL EQUIPMENT FOR FACTORY INSTALLATION

These prices apply only when included on original order for Sailboat and invoiced with same.

Description	Optional Equip. No.	Price
BACKSTAY—Insulated for Radio Antenna	26-10-01	\$70.00
BLOWER—Bilge, 12V	03-02-12	55.00
BOAT HOOK & CLIPS—6'9"	01-11-02	17.00
COMPASS—#406—S Minot Olympic 4", Bracket Mounted, Installed on Fwd. Cockpit Well Bulkhead	07-03-01	85.00
CRADLE—Shipping	22-02-00	210.00
CUSHIONS—Cockpit	02-25-12	90.00
DRAPES for Cabin Windows w/Rods and Brackets	02-29-00	85.00
EXTINGUISHER—CO2—Manual 15#	15-01-15	275.00
CO2—Automatic 15#	15-02-15	435.00
FENDERS—2, Canal 3' Mahogany w/2-10' Lines	01-08-01	25.00
FENDERS—Dock, 6"x15" Air, Set of 4 w/Pump	01-10-11	35.00
GENOA SHEET GEAR—Including Track, Fairlead Blocks	26-04-01	265.00
LIGHTS—Spreader, 12V	11-13-12	38.00
PUMP—Bilge, Electric, 12V, Automatic	16-08-12	90.00
PUMP—Bilge, Electric, 12V, Manual	16-09-12	80.00

Description	Optional Equip. No.	Price
BOW RAIL AND LIFE LINES	17-02-00	\$275.00
RECTIFIER—Dresser, M12-5 to Charge Accy. Battery	14-07-06	70.00
ROLLER REEFING—Main Boom	26-01-01	205.00
SEARCHLIGHT—Hand Portable w/Jack, 12V	11-11-12	26.00
SPEEDOMETER—Kenyon Morcee	18-12-13	115.00
SPINNAKER POLE—w/Track Inc. Guys, Topping Lift, Halyard	26-03-01	535.00
STRAINER—Gasoline, Per. Ea. Eng.	05-02-00	34.00
WINCH—#3 Main Sheet, (1)	26-02-01	150.00
WINCHES—#5 Jib Sheet, in Place of Std. (2)	26-02-02	85.00
WIRING—1-115V AC, 3 Wire, 30 Amp Inlet w/4 3 Wire Outlets & 25' of 3 Wire Shore Cable w/Adapter Outlets Located in Fwd. Cabin, Toilet Compartment, Galley and Dinette	14-00-38	245.00

ALL PRICES ARE F.O.B. FACTORY. PRICES AND SPECIFICATIONS CONTAINED IN THIS LITERATURE ARE BASED ON THE LATEST PRODUCT INFORMATION AVAILABLE AT THE TIME OF PUBLICATION APPROVAL. THE RIGHT IS RESERVED TO MAKE CHANGES AT ANY TIME WITHOUT NOTICE IN PRICES, COLORS, MATERIALS, EQUIPMENT, SPECIFICATIONS, AND MODELS AND ALSO TO DISCONTINUE MODELS. EQUIPMENT AND ACCESSORIES PICTURED BUT NOT INCLUDED IN THE LIST OF STANDARD EQUIPMENT ITEMS WILL BE FURNISHED AT EXTRA COST IF AVAILABLE. IRRESPECTIVE OF THE PLACE OF MANUFACTURE. THE RIGHT IS RESERVED TO SHIP FROM ANY CHRIS-CRAFT FACTORY. ALL ORDERS ACCEPTED SUBJECT TO PRICES PREVAILING AT TIME OF SHIPMENT.

Use Correct Optional Equipment Part Number When Ordering

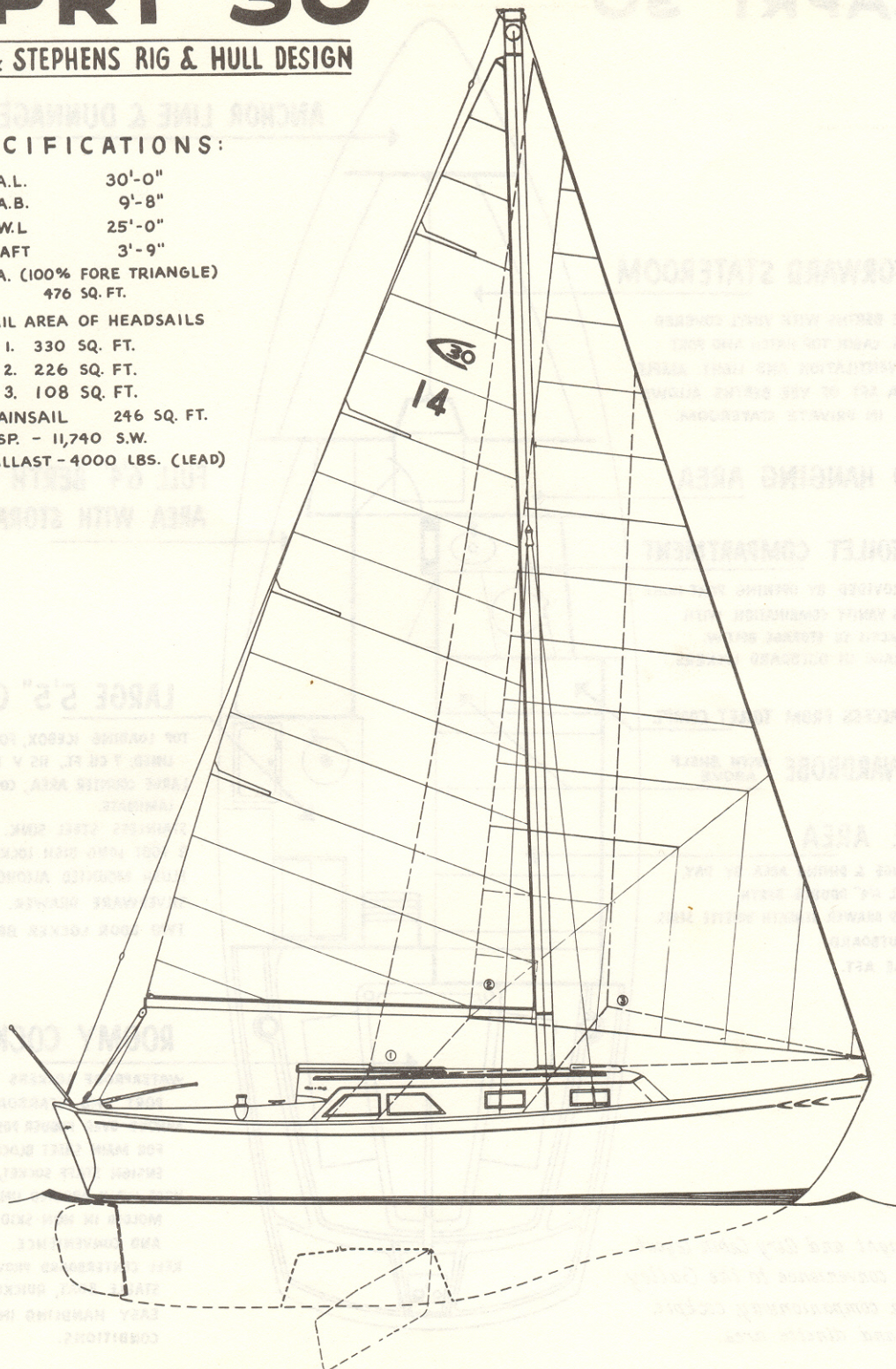
Prices Less Sails

Chris-Craft CAPRI "30"

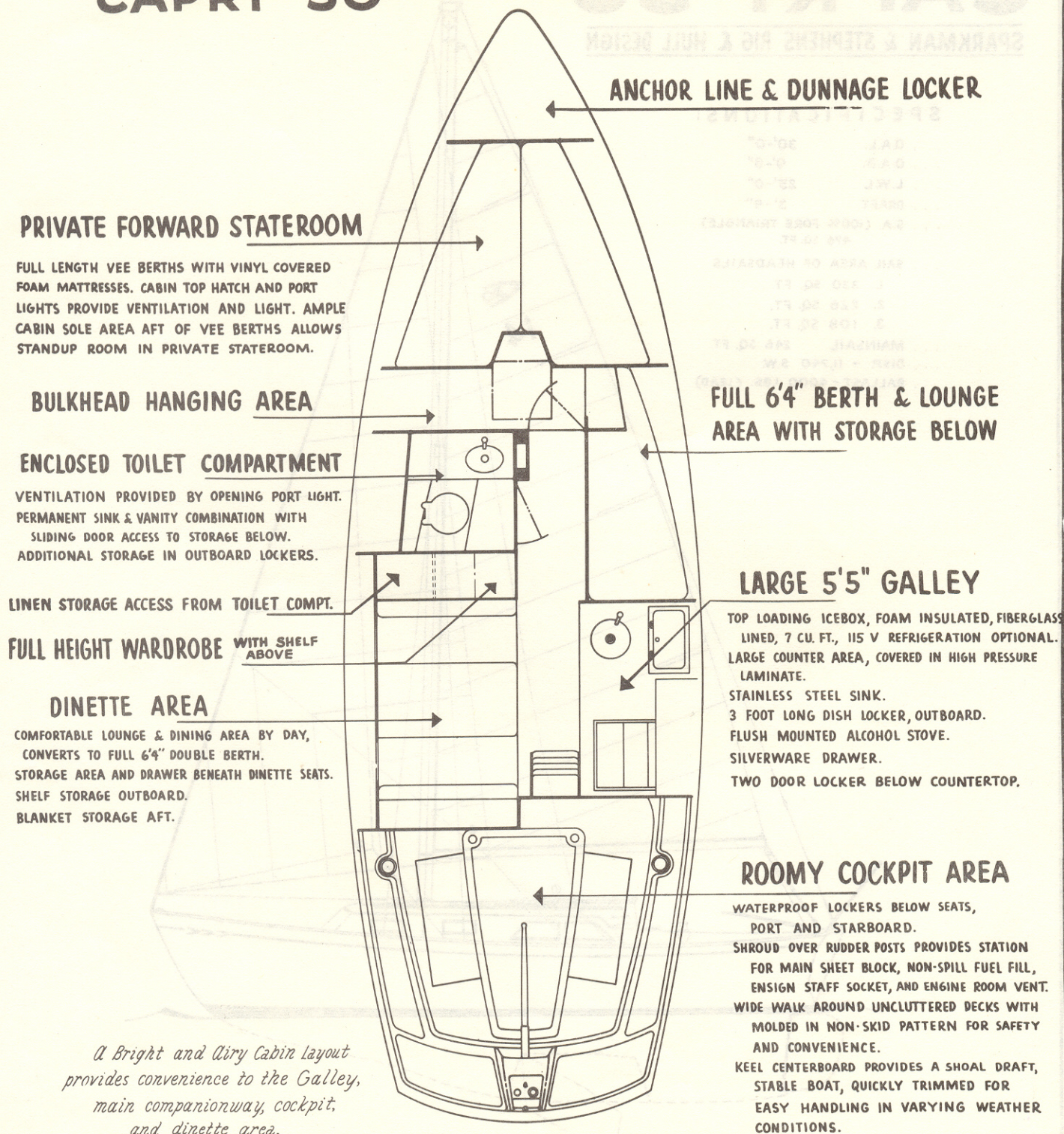
SPARKMAN & STEPHENS RIG & HULL DESIGN

SPECIFICATIONS:

- ... O.A.L. 30'-0"
- ... O.A.B. 9'-8"
- ... L.W.L. 25'-0"
- ... DRAFT 3'-9"
- ... S.A. (100% FORE TRIANGLE) 476 SQ. FT.
- ... SAIL AREA OF HEADSAILS
 1. 330 SQ. FT.
 2. 226 SQ. FT.
 3. 108 SQ. FT.
- ... MAINSAIL 246 SQ. FT.
- ... DISP. - 11,740 S.W.
- ... BALLAST - 4000 LBS. (LEAD)



Chris + Craft
CAPRI "30"



A Bright and Airy Cabin layout provides convenience to the Galley, main companionway, cockpit, and dinette area.