

# Capitan 26

for family cruising / racing by *Chris★Craft*®







## Fast and beautifully balanced... with great accommodations!

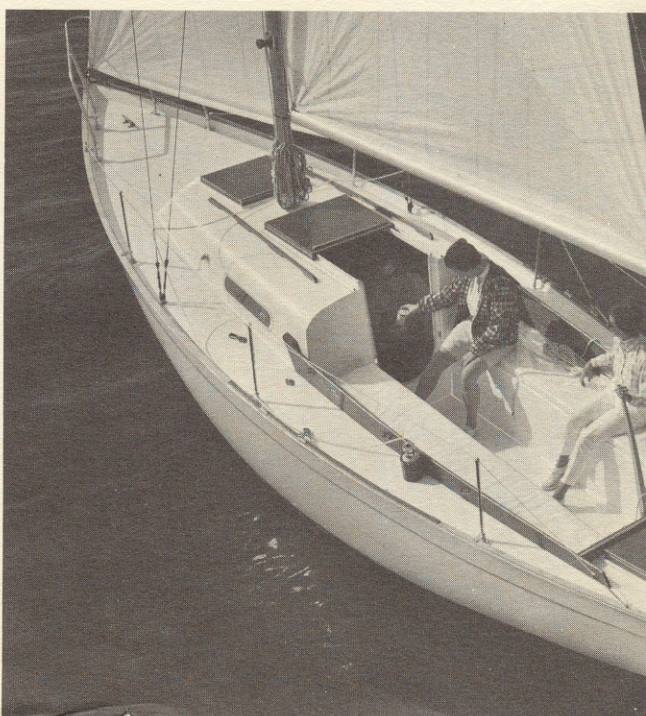
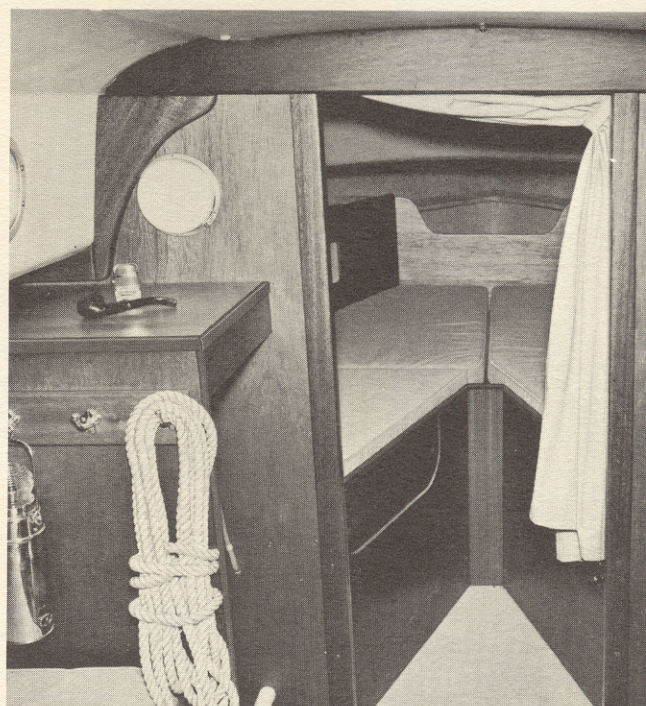
This splendid day sailer and overnighter is the sister of the Capri 26, which has proven to be a great family boat as well as a winner under MORC rules. They share the same hull, and bloodlines will tell every time.

The Capitan 26 is an all-fiberglass sloop, designed by Sparkman & Stephens. She has a big cockpit with molded-in seats port and starboard, and a watertight, ventilated motor well for mounting auxiliary power. The decks are fiberglass.

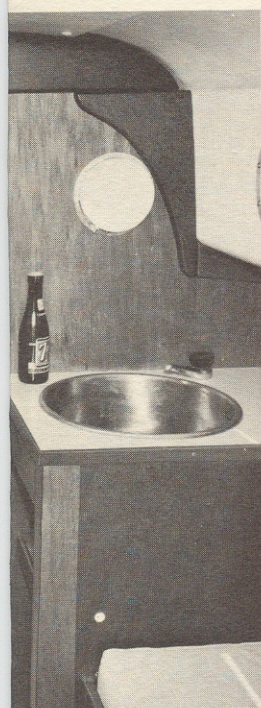
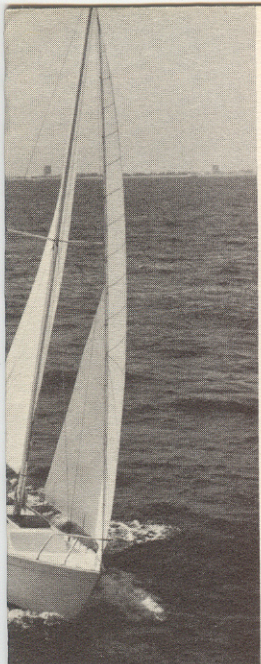
The cabin has vee-berths (cushions extra) forward, and a toilet is available (extra) beneath the port berth. Twin quarterberths with foam mattresses, and a sink and fresh water system, are optional to provide complete cruising accommodations for four.

The underwater design features a fin keel and a rudder skeg for optimum stability and less wetted surface.

The Capitan 26 is a fast, beautifully balanced sloop that's easy to handle, and fun to be aboard. She'll come in for her share of silver with the stiffest competition, too. That's what makes her low price such a surprise. Ask your Chris-Craft Sailboat dealer for full details about this tremendous sailboat value.

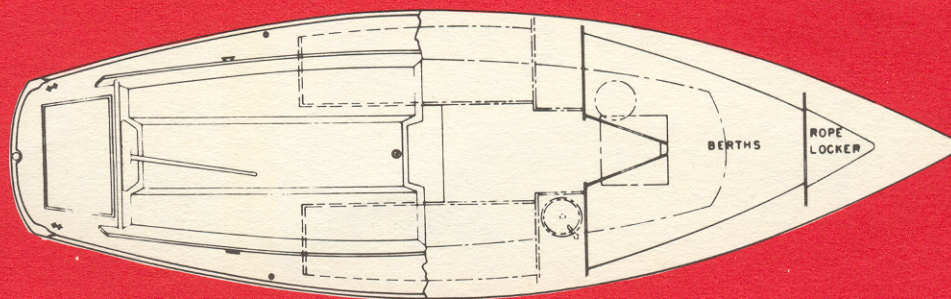






# CHARACTERISTICS

O. A. L. 26'-3"  
 O. A. B. 8'-2"  
 L. W. L. 19'-0"  
 DRAFT 4'-0"  
 S. A. (100% FORE)  
 TRIANGLE 301 SQ. FT.  
 DISP. 4300#  
 BALLAST 1830#  
 MAST HT. FROM D. W. L. 34'-0"



OPTIONAL EQUIPMENT: - - -  
 1 - QUARTER BERTHS P. & S.  
 WITH WARDROBE & SINK  
 2 - TOILET



# Capitan 26

**SPECIFICATIONS** Length Overall — 26'-3" • Length Waterline — 20'-0" • Beam — 8'-2" • Draft — 4'-0" • Displacement — 4300 lbs. • Ballast — 1830 lbs. • Sail Area (100% Fore Triangle) — 301 sq. ft.

**HULL CONSTRUCTION** Entire hull of reinforced fiberglass color impregnated. Hull thickness up to 3/8".

**CHAIN PLATES** Stainless steel bolted to integral bulkheads.

**FASTENINGS** All fastenings are of silicon bronze and brass.

**KEEL** Cast Iron — 1830 lbs. bolted to hull.

**DECKS AND CABIN TOP** Reinforced fiberglass color impregnated. Decks are constructed for strength and stiffness. Decks and cabin top have molded-in non-skid surface pattern. Varnished Philippine mahogany handrails. Bulwark and taffrails are molded into hull with natural teak caps. Inboard scuppers are located on either side to drain deck water overboard.

**DECK FITTINGS** Heavy 8 1/4" mooring cleat forward, two 6 1/4" bronze cleats aft, stainless steel stem head fittings, and bronze bow chocks. Necessary cleats and fairleads for working sails.

**COCKPIT** 8' long for comfortable day sailing and convenient racing. Self-bailing type of one piece reinforced fiberglass color impregnated and molded integrally with deck unit. Self-draining cockpit seats. Clear dark solid Philippine mahogany canted cockpit coamings provide comfortable back rests.

**COMPANIONWAY HATCH, MAIN CABIN TOP FORWARD HATCH AND MOTOR WELL HATCH** Clear dark Philippine mahogany filled and varnished.

**PORT LIGHTS** Stationary.

**CABIN INTERIOR** Two V-berths standard. Two optional quarter berths. Large storage compartments under each berth. Berth trim varnished Philippine mahogany. Fore-

peak rope locker. Vinyl carpet cabin sole. A wardrobe is optional on the port side and a compact galley unit with sink, 18 gal. water tank, storage and separate ice chest is optional, to provide cruising accommodations for four.

**RUDDER** Reinforced fiberglass. Tobin bronze rudder post, bronze fittings.

**TILLER** Varnished ash.

**RIGGING** Masthead sloop rig. Extruded aluminum oval section mast (6063-T6) and oval section boom with roller reefing standard. Stainless steel standing rigging 1 x 19 with swaged fittings at gooseneck and outhaul. Sail tracks integral with mast and boom. Jib and main halyard stainless steel with dacron tail. Fittings for working sails.

**AUXILIARY POWER** Water-tight ventilated motor well. Suggested use of 6 HP maximum auxiliary outboard installation with low profile, long shaft engine. Unique engineering design of well has eliminated all possible flooding.

**SHIPPING DATA** Weight Without Cradle — 4300 lbs. • Weight With Cradle — 4980 lbs. • Length — 26'-3" • Beam — 8'-2" • Height Domestic — 9'-3" • Export with Cradle (Keel Not Attached) — 6'-6".

**STANDARD EQUIPMENT** Hardware — bronze, Rope Locker, Mast and Boom extruded aluminum-coated, Roller Reefing Boom, Handrails on Cabin Roof, V-Berth Platforms, forward.

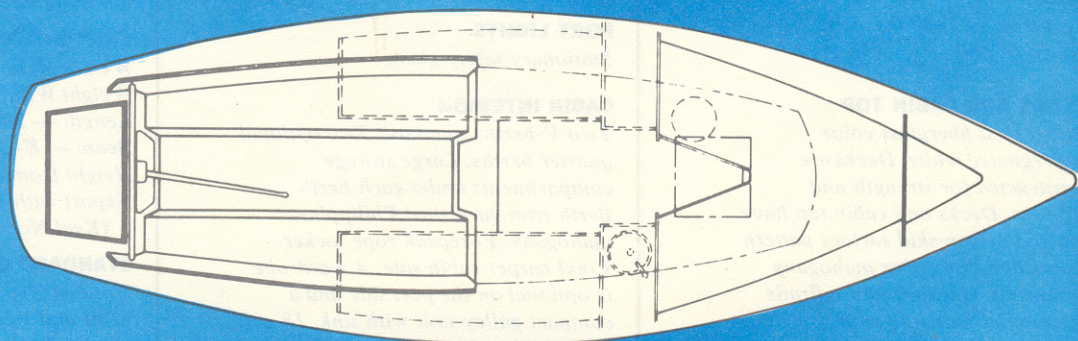
**WARRANTY** For the first 24 months or 400 hours of operation, whichever comes first, Chris-Craft Corporation will repair or replace, at its option, parts defective by reason of faulty workmanship or material returned to the selling dealer with transportation charges to the point of manufacture. For the first 12 months or 200 hours of operation, whichever comes first, Chris-Craft will pay the labor costs as determined by its schedule for removal and reinstallation of such parts. Chris-Craft does not warrant used boat or engine purchases, paints, varnishes, chrome, gelcoats, racing power boats or engines, altered boats or parts, or speeds.

*Chris-Craft*®

Chris-Craft Corporation, Sailboat Division, Pompano Beach, Florida 33061



*Chris-Craft*<sup>®</sup>  
**capitan**  
**26**





# Chris-Craft® capitan 26

Sailboat Division, Chris-Craft Corporation, Pompano Beach, Florida 33061

This splendid day sailer and overnighter is the sister of the Capri 26, which has proven to be a great family cruiser as well as a winner under MORC rules. They share the same hull, and bloodlines will tell every time.

The Capitan 26 is an all-fiberglass sloop, designed by Sparkman & Stephens. She has a big cockpit with molded-in seats port and starboard, and a unique, watertight, ventilated motor well

for mounting auxiliary power. The decks are non-skid fiberglass.

The cabin has vee-berths forward, and a toilet is available (extra) beneath the port berth. Twin quarterberths with foam mattresses, and a sink and fresh water system, are optional to provide complete cruising accommodations for four.

The underwater design features a fin keel and a rudder skeg for

optimum stability and less wetted surface.

The Capitan 26 is a fast, beautifully balanced sloop that's easy to handle, and fun to be aboard. She'll come in for her share of silver with the stiffest competition, too. That's what makes her low price such a surprise. Ask your Chris-Craft Sailboat dealer for full details about this tremendous sailboat value.

## SPECIFICATIONS

Length Overall — 26'- 3"  
Length Waterline — 19'- 0"  
Beam — 8'- 2"  
Draft — 4'- 0"  
Displacement — 4300 lbs.  
Ballast — 1900 lbs.  
Sail Area (100% Fore Triangle) — 301 sq. ft.

## HULL CONSTRUCTION

Entire hull of reinforced fiberglass color impregnated white.  
Hull thickness up to 3/8".

## CHAIN PLATES

Stainless steel bolted to integral bulkheads.

## FASTENINGS

All fastenings are of silicon bronze and brass.

## KEEL

Cast Iron — 1900 lbs. bolted to hull.

## DECKS AND CABIN TOP

Reinforced fiberglass color impregnated white. Decks are constructed for strength and stiffness. Decks and cabin top have molded-in non-skid surface pattern. Varnished Philippine mahogany hand-rails. Bulwark and taffrails are molded into hull with natural teak caps. Scuppers are located on either side to drain deck water overboard.

## DECK FITTINGS

Heavy 8 1/4" mooring cleat forward, two 6 1/4" bronze cleats aft, stainless steel stem head fittings, and bronze bow chocks. Necessary cleats and fairleads for working sails.

## COCKPIT

8' long for comfortable day sailing and convenient racing. Self-bailing type of one piece reinforced fiberglass color impregnated and molded integrally with deck unit. Cockpit floor has non-skid pattern. Self draining cockpit seats. Clear dark solid Philippine mahogany canted cockpit coamings provide comfortable back rests.

## COMPANIONWAY HATCH, MAIN CABIN TOP FORWARD HATCH AND MOTOR WELL HATCH

Clear dark Philippine mahogany filled and varnished.

## PORT LIGHTS

Stationary safety glass.

## CABIN INTERIOR

Two V-berths standard. Two optional quarter berths. Large storage compartments under each berth. Berth trim varnished Philippine mahogany. Forepeak rope locker. Vinyl carpet cabin sole. A wardrobe is optional on the port side and a compact galley unit with sink, 18 gal. water tank, storage and separate ice chest is optional, to provide cruising accommodations for four.

## RUDDER

Reinforced fiberglass. Tobin bronze rudder post, bronze fittings.

## TILLER

Varnished ash.

## RIGGING

Masthead sloop rig. Extruded aluminum oval section mast (6063-T6) and oval section boom with roller reefing standard. Stainless steel standing rigging 1 x 19 with swaged fittings at gooseneck and outhaul. Sail tracks integral with mast and boom. Jib and main halyard stainless steel with dacron tail. Fittings for working sails.

## AUXILIARY POWER

Water-tight ventilated motor well. Suggested use of 6 HP maximum auxiliary outboard installation with low profile, long shaft engine. Unique engineering design of well has eliminated all possible flooding.

## SHIPPING DATA

Weight Without Cradle — 4300 lbs.  
Weight With Cradle — 4980 lbs.  
Length — 26'- 3"  
Beam — 8'- 2"  
Height Domestic — 9'- 3"  
Export with Cradle  
(Keel Not Attached) — 6'- 6"

## STANDARD EQUIPMENT

Hardware — bronze, Rope Locker, Mast and Boom extruded aluminum-coated, Roller Reefing Boom, Handrails on Cabin Roof, V-Berth Platforms, forward.





# SAILBOAT DIVISION

EFFECTIVE MARCH 1, 1968

DEALER: \_\_\_\_\_

SHIP TO: \_\_\_\_\_

\_\_\_\_\_

\_\_\_\_\_

\_\_\_\_\_

\_\_\_\_\_

by \_\_\_\_\_

☐ COMMERCIAL TRUCK \_\_\_\_\_

DEALER ORDER NO.: \_\_\_\_\_

SHIP VIA: ☐ DEALER TRUCK \_\_\_\_\_

CUSTOMER: \_\_\_\_\_

☐ RAIL-ROUTING \_\_\_\_\_

SHIP WITH: \_\_\_\_\_

Deposit check attached for \$ \_\_\_\_\_

TERMS: \_\_\_\_\_

Date \_\_\_\_\_

**CAPITAN 26 . . . . . \$5,790**

COLORS: HULL \_\_\_\_\_; BOOT TOP \_\_\_\_\_; BOTTOM \_\_\_\_\_

Approved Colors: White, Light Blue, Dark Blue, Vermillion and Cove Green.

## CHRIS-CRAFT APPROVED OPTIONAL EQUIPMENT FOR FACTORY INSTALLATION

These prices apply only when included on original order for Sailboat and invoiced with same.

Description	Optional Equip No.	Price
<input type="checkbox"/> ANCHOR—13 lb. Std. Danforth w/Shackle	01-01-13	\$31.00
<input type="checkbox"/> BOOT, TOP—Painted Vermillion	22-20-01	83.00
<input type="checkbox"/> Painted White	22-20-02	83.00
<input type="checkbox"/> Painted Black	22-20-03	83.00
<input type="checkbox"/> Painted Light Blue	22-20-04	83.00
<input type="checkbox"/> Painted Dark Blue	22-20-05	83.00
<input type="checkbox"/> Painted Cove Green	22-20-06	83.00
<input type="checkbox"/> CARPET—for Cabin Sole in place of Std.	12-18-01	34.00
<input type="checkbox"/> CRADLE—Shipping	22-02-00	155.00
<input type="checkbox"/> CUSHIONS—Cockpit	02-25-12	110.00
<input type="checkbox"/> DRAPES—w/Rods and Brackets	02-29-00	61.00
<input type="checkbox"/> GENOA SHEET GEAR—including Track, Fairlead Blocks and Sheets	26-04-01	190.00
<input type="checkbox"/> LIGHTING—Running and Interior w/1-12V Battery	11-24-00	175.00
<input type="checkbox"/> LINE—Anchor 100' of 1/2" Nylon w/Thimble	01-03-06	40.00
<input type="checkbox"/> PANELING & SHELVES—Fwd. & Main Compartments	12-24-02	220.00
<input type="checkbox"/> BOW RAIL and LIFE LINES	17-02-00	310.00

Description	Optional Equip No.	Price
<input type="checkbox"/> RECTIFIER—M-12-5 Rectifier w/1 115V AC, 30 Amp 3-Wire Inlet, 2 Duplex Outlets & 25' 3 Cond. Ship to Shore Cable w/Adaptor	14-07-08	\$315.00
<input type="checkbox"/> ROLLER REEFING—Main Boom, Geared in Place of Std.	26-01-03	72.00
<input type="checkbox"/> SPEEDOMETER—Kenyon Morcee	18-12-13	125.00
<input type="checkbox"/> SPINNAKER POLE—w/Track Inc. Guys & Sheet, Topping Lift, Halyard & Blocks	26-03-01	310.00
<input type="checkbox"/> WINCHES—#1-Top Action Jib Sheet (2)	26-02-04	165.00
<input type="checkbox"/> #2-Top Action Jib Sheet (2)	26-02-05	180.00
<input type="checkbox"/> #1-Top Action for Jib Halyard (1)	26-02-09	89.00
<input type="checkbox"/> WIRING—Lightning Arrestor in Conjunction with Dock, 115V AC Inlet	14-06-04	19.00

ALL PRICES ARE F.O.B. FACTORY. PRICES AND SPECIFICATIONS CONTAINED IN THIS LITERATURE ARE BASED ON THE LATEST PRODUCT INFORMATION AVAILABLE AT THE TIME OF PUBLICATION APPROVAL. THE RIGHT IS RESERVED TO MAKE CHANGES AT ANY TIME WITHOUT NOTICE IN PRICES, COLORS, MATERIALS, EQUIPMENT, SPECIFICATIONS, AND MODELS AND ALSO TO DISCONTINUE MODELS. EQUIPMENT AND ACCESSORIES PICTURED BUT NOT INCLUDED IN THE LIST OF STANDARD EQUIPMENT ITEMS WILL BE FURNISHED AT EXTRA COST IF AVAILABLE. IRRESPECTIVE OF THE PLACE OF MANUFACTURE. THE RIGHT IS RESERVED TO SHIP FROM ANY CHRIS-CRAFT FACTORY. ALL ORDERS ACCEPTED SUBJECT TO PRICES PREVAILING AT TIME OF SHIPMENT.

Use Correct Optional Equipment Part Number When Ordering

Prices Less Sails

**CHRIS-CRAFT WILL ONLY HONOR ORDERS FROM FRANCHISED SAILBOAT DEALERS**

SAILBOAT DIVISION • CHRIS★CRAFT CORPORATION • POMPANO BEACH, FLORIDA

PRINTED IN U.S.A.

Use Back of Page for Special Instructions