

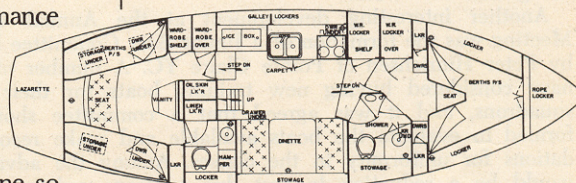
# ANNOUNCING A CHRIS-CRAFT WITH A LITTLE SOMETHING DIFFERENT. SAILS.

To many, the fact that Chris-Craft now builds a motor sailer comes as a surprise. But upon closer inspection the Caribbean 35 is really no surprise at all. It is exactly what you would expect from Chris-Craft.

Like every Chris-Craft, the 35 was designed to a specific performance goal. Result: A hull that is decidedly sea kindly and maneuverable. Yet one that will knife through the water with uncommon quickness. And one so docile you can handle it single handedly.

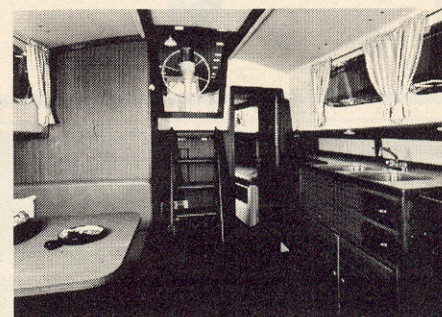
With an efficient, reliable diesel engine, it is perhaps the ideal cruising sailboat.

Like every Chris-Craft yacht, the Caribbean motor sailer was built to provide the ultimate in luxury for the owner and his guests. Private state-rooms and heads fore and aft. A main



cabin that includes a completely equipped galley, a dinette and a companionway that leads directly to the aft cabin. Carefully coordinated draperies, carpeting and upholstery. And a marvelously lavish use of teak to complete the decor.

Of course, like every Chris-Craft, the 35 is built to exacting Chris-Craft standards. In a factory where one of every five workers is paid to criticize our boats to perfection. In fact the only real difference between the 35 Motor Sailer and every other Chris-Craft is the force that moves it.



And that's a most reassuring thought.

For more information about the 35' Motor Sailer, just write Chris-Craft Corporation, Box 860M, Pompano Beach, Florida 33061. We'll send you a complete kit on a Chris-Craft that's a little different.







*Chris-Craft*<sup>®</sup>  
Caribbean 35